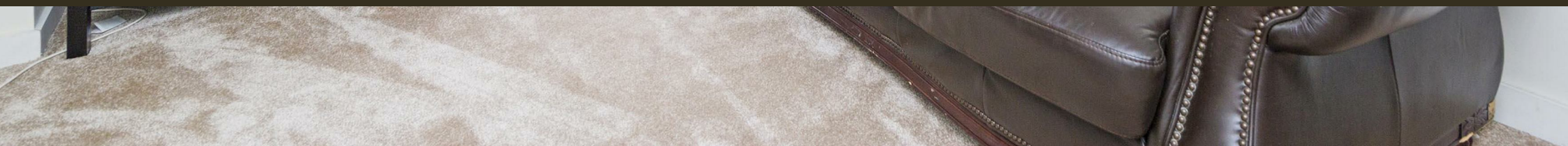




Woods House, 7 Gatliff Road
London SW1W

GARTONJONES.COM



Woods House, 7 Gatliff Road
London, SW1W

£610 Per Week

GARTON JONES.COM

8 Gatliff Road
Grosvenor
Waterside
Chelsea
London
SW1W 8DP

Lettings:
+44 (0) 20 7730 5007
gws@gartonjones.com
www.gartonjones.com

A one DOUBLE BEDROOM apartment for rent of approx. 481sq.ft (44.64sq.m) in Woods House, Grosvenor Waterside. This bright apartment benefits from an OPEN PLAN reception room with a Juliette style balcony, kitchen, bedroom with fitted wardrobes and bathroom. On-site Sainsbury's Local, coffee shop and private kids' club. SLOANE SQUARE and VICTORIA station with access to Gatwick Express trains are within walking distance.

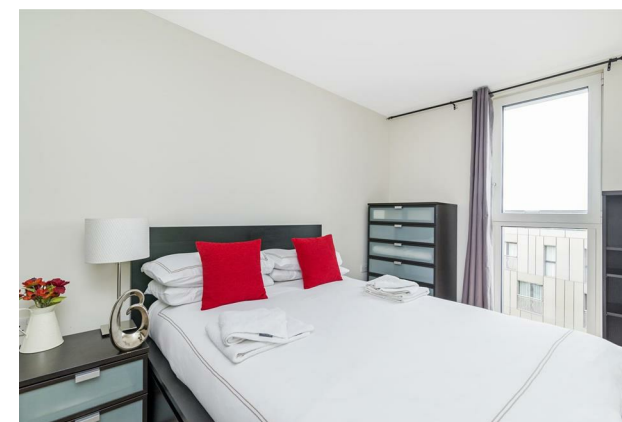
Available via Garton Jones on-site office at Grosvenor Waterside (underneath Bramah House).

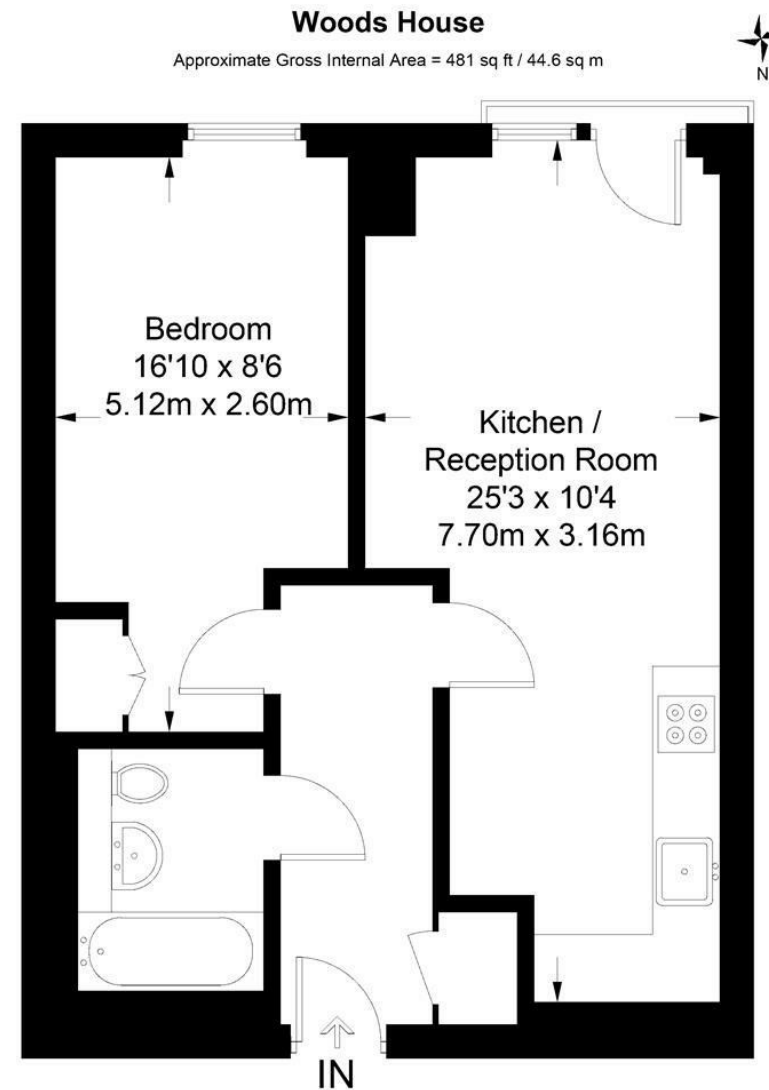
Council Tax: Westminster City Council (band D)

EPC Rating: C (80)

12 month minimum term. 5 week deposit.

- 481sq.ft (44.64sq.m)
- 1 Double Bedroom
- Open Plan Reception Room
- Smart Fitted Kitchen
- Modern Bathroom
- Juliette Style Balcony
- Furnished
- Leisure Suite with Gym by Separate Negotiation
- On-Site Sainsbury's, Creche, Coffee Shop & Purple Dragon Private Kids Club
- Walking Distance to Sloane Square & Victoria Station





Not to scale, for guidance only and must not be relied upon as a statement of fact.
All measurements and areas are approximate only and have been prepared in
accordance with the current edition of the RICS Code of Measuring Practice.

